



**Division of
Information Technology**
STEVENS INSTITUTE *of* TECHNOLOGY

Stevens Data Management & Data Governance Plans

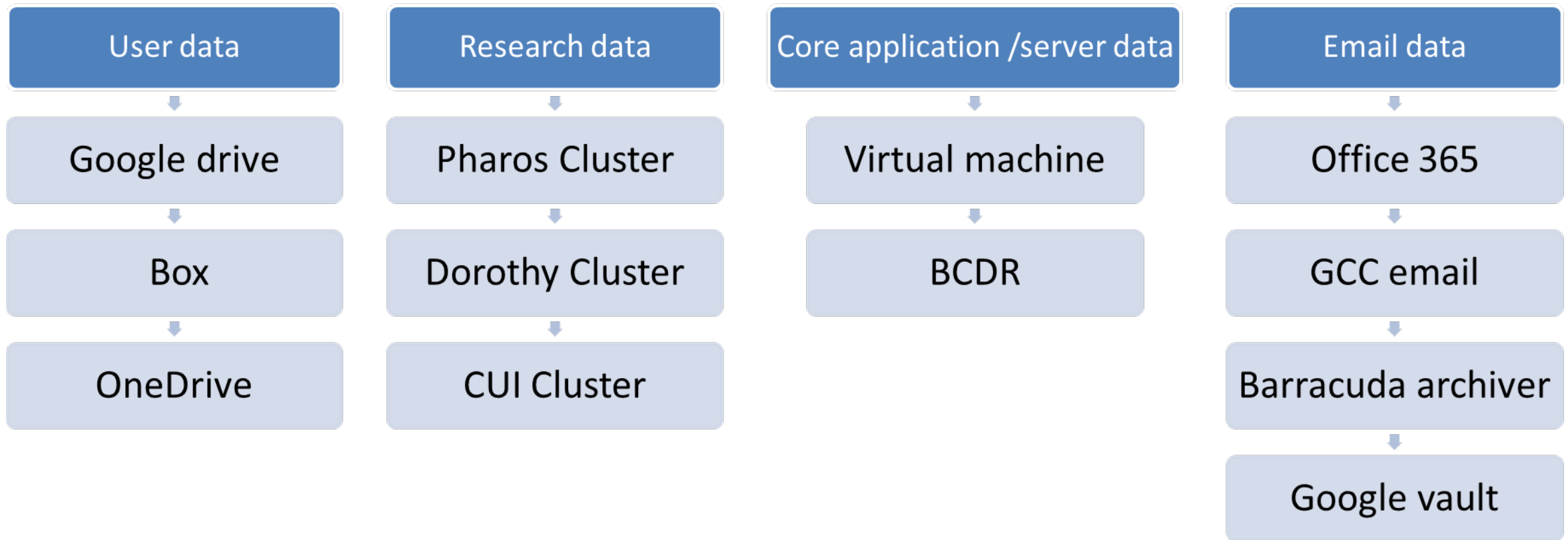
Tej Patel, Vice President for Information Technology & CIO
Michael Parente, Assistant Vice President for Information Technology

April 28, 2022



Current State of Storage Overview

- Multiple platforms
- Limited visibility
- Less secure



Building Foundational Technologies

Stevens Enterprise Data Warehouse & BI Initiative



Applications



On-Prem and Cloud/SaaS Information Systems

- slate
- blackbaud RE
- canvas
- workday
- kuali financial system

Cloud ETL/ELT Tools

- Fivetran
- dbt

Cloud Data Warehouse & Data Lakes

- snowflake

Cloud BI Tools

- tableau
- SIGMA
- Power BI



Power Users



Faculty and Staff End Users

Via system-provided reporting

Via system-provided reporting

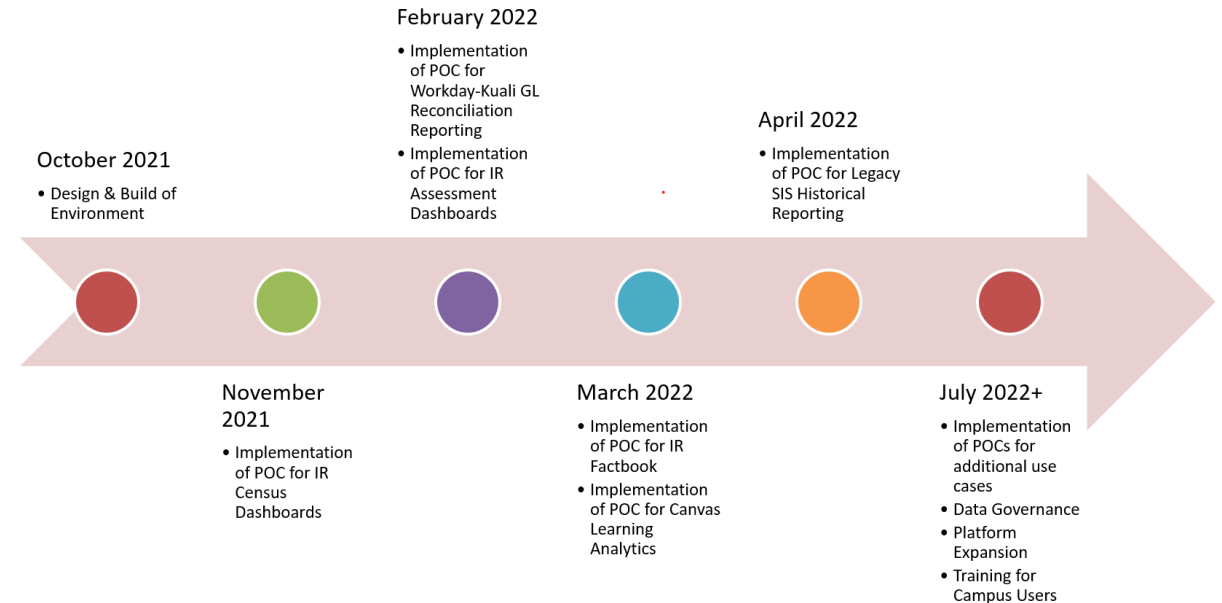
Building Foundational Technologies



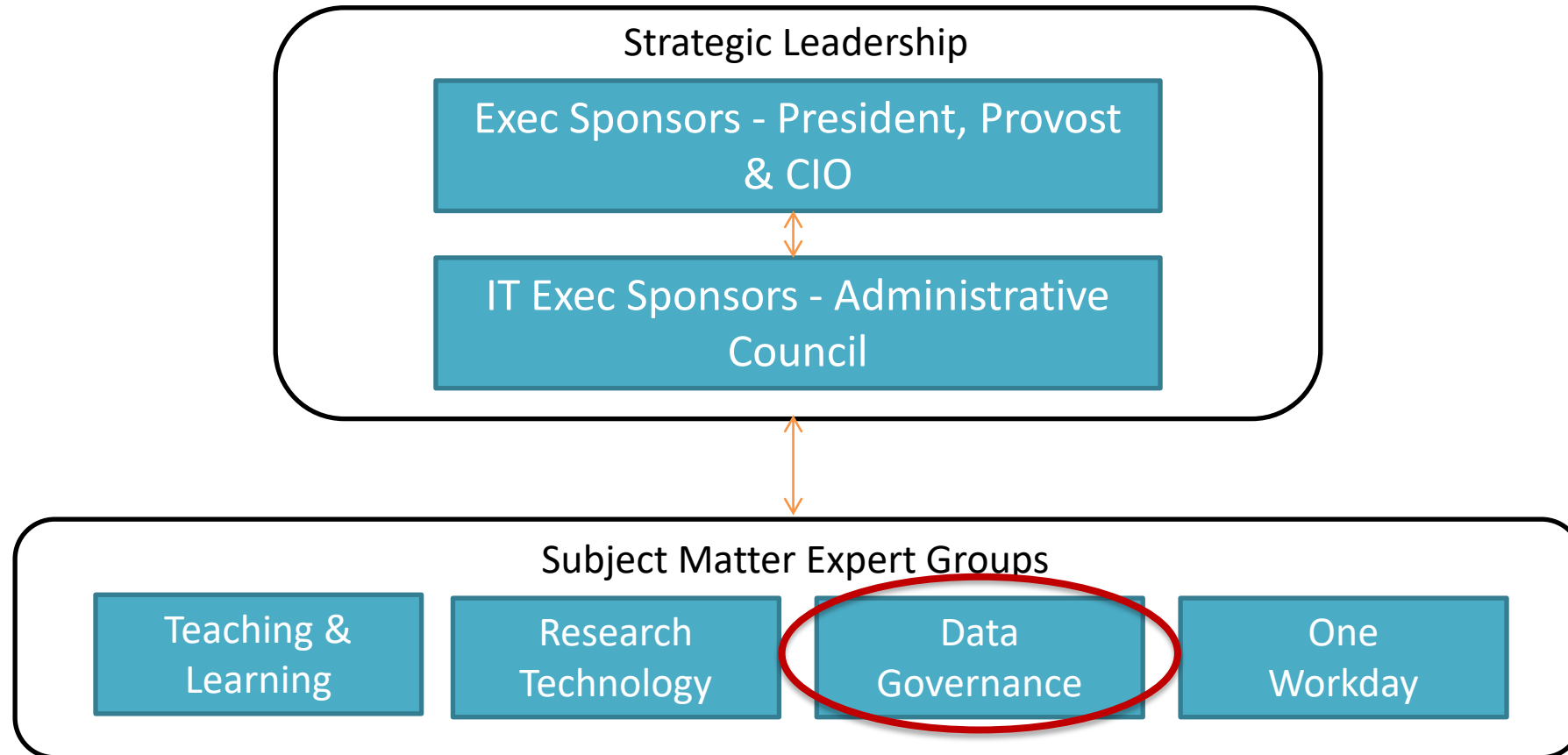
BI/Analytics Proofs of Concept:

- Institutional Research census dashboards
- Institutional Research assessment dashboards
- Institutional Research factbook
- Canvas learning analytics
- Legacy SIS historical reporting
- Workday-Kuali GL reconciliation reporting

Timeline



Data Governance within IT Governance



Data Governance / Data Management SME Group

Charge	Responsibilities
<ul style="list-style-type: none"> • Improve the quality, consistency, security and availability of institutional data • Promote use of data and analytical to inform institutional decisions • Recommend and sponsor efforts to improve understanding of data definitions and adoption of reporting tools • Advise on the selection of analytical platforms and reporting tools 	<p>The committee is an advisory group which makes recommendations regarding:</p> <ul style="list-style-type: none"> • Policies and procedures to improve data consistency and security • Annual projects and investment priorities to expand reporting and analytical capabilities • Changes to processes, use of fields or definitions of data required to improve the utility and accuracy of reports and analyses
<h2>Membership</h2>	
<p>Executive Director Office of Institutional Effectiveness, CISO, AVP IT, Associate Dean (rotating) senior representative from Enrollment Services, Student Affairs, Advancement, Human Resources, Finance, Research Administration, and Registrar.</p>	

Q & A / Discussion

- How are you managing user and institutional data on your campus?
- Where does data governance sit on your campus? Who leads it? How many people are involved?
- What's working with your data management/governance setup? What isn't?





STEVENS
INSTITUTE *of* TECHNOLOGY
THE INNOVATION UNIVERSITY®

STEVENS.EDU/IT
support@stevens.edu